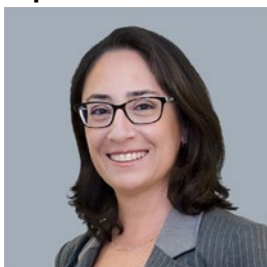


# Shearman & Sterling | Brazil Desk

## Capital Markets



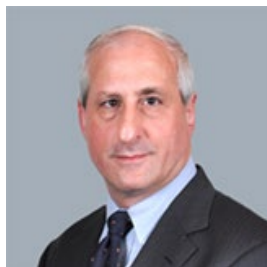
**Roberta B. Cherman**

Partner

São Paulo

T: +55 11 3702 2245

[roberta.cherman@shearman.com](mailto:roberta.cherman@shearman.com)



**Stuart Fleischmann**

Partner

New York

T: +1 212 848 7527

[sfleischmann@shearman.com](mailto:sfleischmann@shearman.com)



**Jonathan A. Lewis**

Counsel

São Paulo

T: +55 11 3702 2246

[jonathan.lewis@shearman.com](mailto:jonathan.lewis@shearman.com)



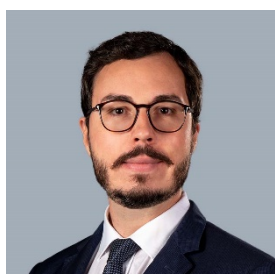
**Debora Ayoub**

Associate

New York

T: +1 212 848 5247

[debora.ayoub@shearman.com](mailto:debora.ayoub@shearman.com)



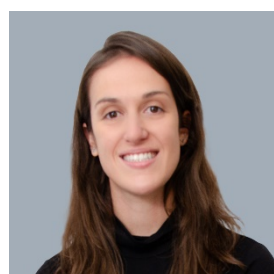
**Francisco Mont'alverne**

Associate

São Paulo

T: +55 11 3702 2241

[francisco.alverne@shearman.com](mailto:francisco.alverne@shearman.com)



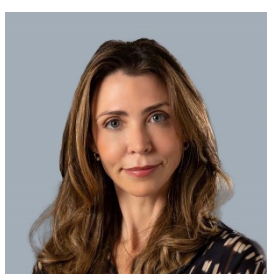
**Marina Mendes Correa**

Associate

São Paulo

T: +55 11 3702 2242

[marina.correa@shearman.com](mailto:marina.correa@shearman.com)



**Gabriela Laufer**

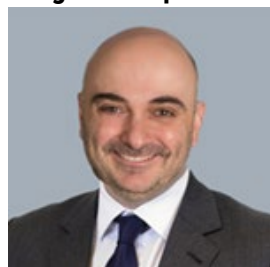
Attorney

São Paulo

T: +55 11 3702 2236

[gabriela.laufer@shearman.com](mailto:gabriela.laufer@shearman.com)

## Mergers & Acquisitions



**George Karafotias**

Partner

New York

T: +1 212 848 4536

[gkarafotias@shearman.com](mailto:gkarafotias@shearman.com)



**Manuel Orillac**

Partner

Houston

T: +1 713 354 4886

[morillac@shearman.com](mailto:morillac@shearman.com)

## US Private Equity Growth



**Gabriel Salinas**

Counsel

Houston

T: +1 713 354 4846

[gabriel.salinas@shearman.com](mailto:gabriel.salinas@shearman.com)



**Ann Marie Cowdrey**

Partner

Dallas

T: +1 241 271 5352

[annmarie.cowdrey@shearman.com](mailto:annmarie.cowdrey@shearman.com)

---

## Project Development & Finance



**Alexandro Padrés**

Partner

New York  
T: +1 212 848 7499  
[alexandro.padres@shearman.com](mailto:alexandro.padres@shearman.com)



**Christian Rudloff**

Counsel

New York  
T: +1 212 848 4301  
[christian.rudloff@shearman.com](mailto:christian.rudloff@shearman.com)

---

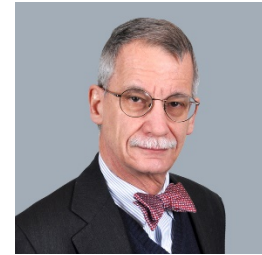
## Finance



**Denise Grant**

Partner

New York  
T: +1 212 848 7959  
[dgrant@shearman.com](mailto:dgrant@shearman.com)



**William Yaro**

Attorney

New York  
T: +1 212 848 7037  
[wyaro@shearman.com](mailto:wyaro@shearman.com)

---

## Investigations & Compliance



**Philip Urofsky**

Partner

Washington DC  
T: +1 202 508 8060  
[philip.urofsky@shearman.com](mailto:philip.urofsky@shearman.com)



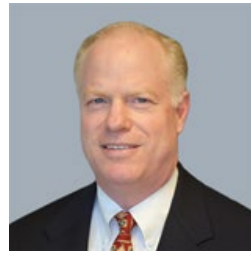
**Paula Howell Anderson**

Partner

New York  
T: +1 212 848 7727  
[paula.anderson@shearman.com](mailto:paula.anderson@shearman.com)

---

## Tax



**Larry Crouch**

Partner

Menlo Park And New York  
T: +1 212 848 4431  
[lcrouch@shearman.com](mailto:lcrouch@shearman.com)

---

## Derivatives & Structure Products



**Geoffrey Goldman**

Partner

New York  
T: +1 212 848 4867  
[geoffrey.goldman@shearman.com](mailto:geoffrey.goldman@shearman.com)

---

## Financial Restructuring & Insolvency



**Mark Shapiro**

Partner

New York  
T: +1 212 848 4668  
[mark.shapiro@shearman.com](mailto:mark.shapiro@shearman.com)

---

## Real Estate



**Malcolm Montgomery**

Partner

New York  
T: +1 212 848 7587  
[mmontgomery@shearman.com](mailto:mmontgomery@shearman.com)

---

## Tech Group



**Carmelo Gordian**

Partner

Austin  
T: +1 512 647 1902  
[carmelo.gordian@shearman.com](mailto:carmelo.gordian@shearman.com)

---

## International Arbitration



**Christopher M. Ryan**

Partner

Washington DC  
T: +1 202 508 8098  
[cryan@shearman.com](mailto:cryan@shearman.com)

---

## Financial Institutions Advisory & Financial Regulatory



**Thomas Donegan**

Partner

London  
T: +44 20 7655 5566  
[thomas.donegan@shearman.com](mailto:thomas.donegan@shearman.com)



**Reena Sahni**

Partner

New York  
T: +1 212 848 7324  
[reena.sahni@shearman.com](mailto:reena.sahni@shearman.com)



**Jennifer Morton**

Partner

New York  
T: +1 212 848 5187  
[jennifer.morton@shearman.com](mailto:jennifer.morton@shearman.com)